

**GENERAL NOTES:**

1. ALL FASTENERS SHALL BE IN ACCORDANCE WITH THESE DRAWINGS. SPECIFIED ANCHOR EMBED TO BASE MATERIAL SHALL BE EXTENDED WALL FINISH OR 3/4" MIN. CONCRETE. FASTENERS MUST BE PROPERLY DESIGNED & INSTALLED TO TRANSFER WIND LOADS TO THE STRUCTURE.
  2. THESE NON-IMPACT RATED PRODUCT INSTALLATIONS ARE IN ACCORDANCE WITH AND MET THE REQUIREMENTS OF THE FLORIDA BUILDING CODE (FBC).
  3. ALL ANCHORS SECURING PRODUCT FRAMES TO PRESSURE TREATED BUCKS OR WOOD FRAMING SHALL BE CAPABLE OF RESISTING CORROSION CAUSED BY THE PRESSURE TREATING CHEMICALS IN THE WOOD.
  4. MATERIALS, INCLUDING BUT NOT LIMITED TO STEEL SCREWS, SHALL COME FROM THE SAME MANUFACTURER.
  5. MATERIALS SHALL MEET THE REQUIREMENTS OF FLORENCE COUNTY SPECIFICATIONS FOR STEEL FASTENERS.
  6. TO THE BEST OF OUR KNOWLEDGE, THE PRODUCT SHOWN HEREIN IS CERTIFIED & QUALITY ASSURED BY A FLORIDA STATE APPROVED BUSINESS & PROFESSIONAL REGULATION SPECIFICATIONS. PRODUCT ASSEMBLY IS NOT PART OF THIS DRAWING AND SHALL BE IN ACCORDANCE WITH THE MANUFACTURER'S QUALITY ASSURANCE SPECIFICATIONS & TESTING REPORTS.
  7. CERTIFICATION OF THESE PRODUCT INSTALLATIONS SHALL BE CONSIDERED VOID IF ANY OF THE FOLLOWING APPLY:
    - 1) PRODUCT IS INSTALLED WITHOUT A BUILDING PERMIT FROM THE APPLICABLE LOCAL BUILDING DEPARTMENT.
    - 2) PRODUCT IS INSTALLED BY ANYONE OTHER THAN A LICENSED CONTRACTOR EXPERIENCED WITH INSTALLATIONS OF THIS TYPE OF PRODUCT.
    - 3) IF CHANGES HAVE OCCURRED TO THE PRODUCT'S CERTIFICATION ENTITY'S CERTIFICATE THAT CAUSE THESE INSTALLATIONS TO BE INCORRECT OR INCONSISTENT WITH WHAT HAS BEEN TESTED.
    - 4) THE LEAST DESIGN PRESSURE SPECIFIED EITHER IN THIS DRAWING OR IN THE PRODUCT'S CERTIFICATION SHALL CONTROL FOR THE INSTALLED PRODUCT INSTALLATION ONLY. WATER PROOFING OF THE INSTALLED PRODUCT IS NOT PART OF THIS INSTALLATION CERTIFICATION. THAT RESPONSIBILITY SHALL BE THAT OF THE MANUFACTURER &/OR INSTALLER.
- INSTALLATION EVALUATION IS BASED ON APPLICABLE ANCHOR STANDARDS AND/OR INFORMATION & RESULTS FROM APPLICABLE TEST REPORTS. THE FLORIDA BUILDING CODE VERSION CONSIDERED WITH THE EVALUATION WAS THAT IN FORCE AT THE TIME OF THE EVALUATION. IN THE EVENT OF CODE VERSION CHANGES/UPDATES DURING THE EVENT THAT NEW OR ADDITIONAL TESTING IS REQUIRED, THE MANUFACTURER'S PRODUCT, PERIOD OF STATE APPROVAL, AND/OR CERTIFICATION SHALL BE THE STATE OF RECORD THAT THE INSTALLATIONS SPECIFIED HERE-IN ARE CURRENT WITH THE THEN CURRENT TESTING, CODE AND APPLICABLE STANDARDS.

**FRAME ANCHOR REQUIREMENTS TABLE**

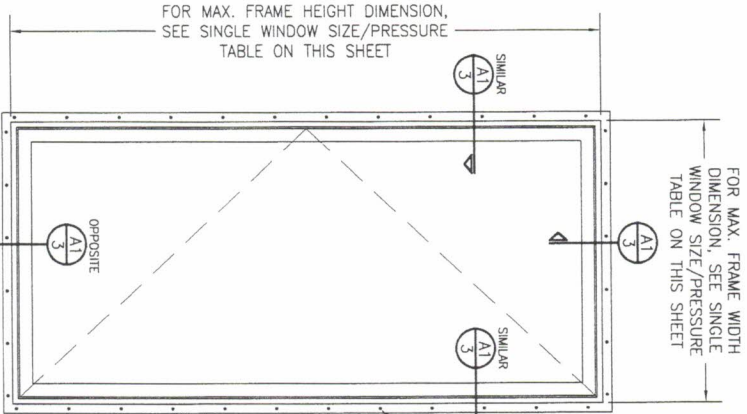
OPENING TYPE (SUBSTRATE)	FRAME/CLIP/NAIL FIN TO OPENING FASTENER TYPE	MINIMUM EMBED	MINIMUM EDGE DIST.
<b>FRAME SCREWS</b>			
MIN. 2X4 WOOD FRAME OR BUCK (MIN. GR. 3 & G=0.55)	NO. 10 SMS OR WOOD SCREW	1 1/4"	3/4"
MIN. 18 GA. 33 KSI METAL STUD	NO. 10 GR. 5 SELF TAP/DRILL SCREW	FULL	1/2"
MIN. 1/8" THK A36 STEEL	NO. 10 GR. 5 SELF TAP/DRILL SCREW	FULL	1/2"
MIN. 1/8" THK A36 STEEL	NO. 10 GR. 5 SELF TAP/DRILL SCREW	FULL	1/2"
MIN. C-90 CMU OR 2500 PSI CONCRETE	(1) 1/4" CONCRETE SCREW	1 1/4"	2"
<b>INSTALLATION CLIP SCREWS</b>			
(3) MIN. 2X6 WOOD FRAME OR BUCK (MIN. GR. 3 & G=0.55)	NO. 8 SMS SCREW	1 1/8"	3/4"
MIN. 18 GA. 33 KSI METAL STUD	NO. 8 GR. 5 SELF TAP/DRILL SCREW	FULL	1/2"
MIN. 1/8" THK A36 STEEL	NO. 8 GR. 5 SELF TAP/DRILL SCREW	FULL	1/2"
MIN. 1/8" THK 6063-T5 ALUM.	NO. 8 GR. 5 SELF TAP/DRILL SCREW	FULL	1/2"
<b>(2) NAILING FIN FASTENERS</b>			
MIN. 2X4 WOOD FRAME OR BUCK (MIN. GR. 3 & G=0.55)	NO. 8 SMS SCREW	1 3/8"	1/2"
MIN. 2X4 WOOD FRAME OR BUCK (MIN. GR. 3 & G=0.55)	11 GA. ROOFING NAIL	1 5/8"	1/2"
MIN. 1/8" THK A36 STEEL	NO. 8 GR. 5 SELF TAP/DRILL SCREW	FULL	1/2"
MIN. 1/8" THK 6063-T5 ALUM.	NO. 8 GR. 5 SELF TAP/DRILL SCREW	FULL	1/2"

**ALLOWABLE SINGLE WINDOW SIZE/PRESSURE TABLE**

MAXIMUM FRAME WIDTH DIMENSION (IN.)	MAXIMUM FRAME HEIGHT DIMENSION (IN.)	ALLOWABLE PRESSURE (+/- PSF)
37 1/2	59 1/2	+50/-60
37 1/2	79 1/2	+/-50

CONDITIONS SHOWN IN THIS DRAWING & THIS TABLE ARE GOVERNED BY INSTALLATION REQUIREMENTS ONLY. THE GOVERNING CONDITIONS ON ANY SPECIFIC WINDOW UNIT SHALL BE THE LESSER OF THOSE SPECIFIED IN THE WINDOWS STATE APPROVAL OR THAT SHOWN IN THESE DRAWINGS.

LOGG & HINGE HARDWARE VARIES WITH EACH WINDOW LISTED IN THE WINDOWS APPROVAL AND SHOULD BE VERIFIED FOR EACH WINDOW AS TO WHAT IS APPLICABLE FOR EACH WINDOW'S SIZE AND REQUIRED DESIGN PRESSURE.



**EXTERIOR ELEVATION: SINGLE WINDOW**  
SCALE: 3/4" = 1'-0"  
(NAIL FIN MOUNT CONDITION)

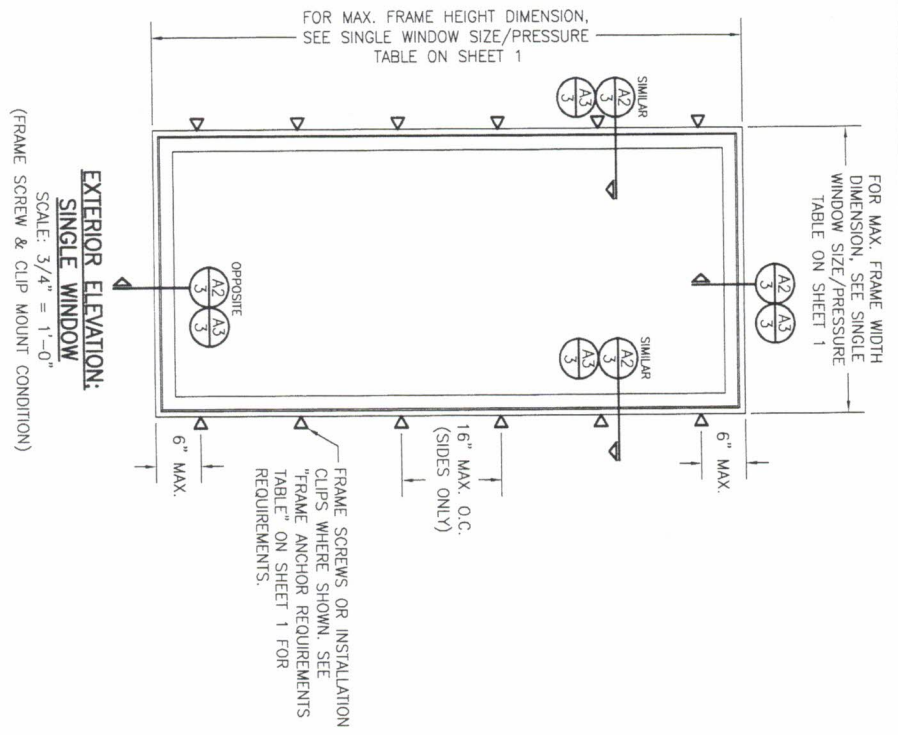
**ANCHOR/SUBSTRATE EVALUATION NOTE:**  
ALL ANCHORS IN THEIR SPECIFIED SUBSTRATES HAVE BEEN ANALYZED IN ACCORDANCE WITH THEIR APPLICABLE STANDARD(S) AND ARE FOUND TO BE CAPABLE OF SUPPORTING ALL LOADS IMPOSED ON THEM UNDER THE GUIDELINES OF THIS DOCUMENT. ANY SUBSTRATES OR CONDITIONS OUTSIDE OF WHAT IS SHOWN HERE-IN SHALL BE SUBJECT TO JOB SPECIFIC ENGINEER'S REVIEW & CERTIFICATION.

**INSTALLATION NOTE:**  
WHEN NECESSARY, INSTALLATION METHODS MAY BE MIXED WITH ANY ONE WINDOW SUCH THAT INDIVIDUAL SIDES OF THE WINDOW MAY USE ONE OR THE OTHER ANCHOR METHOD (EXAMPLE: SILL MAY USE FRAME SCREWS METHOD WHILE OTHER SIDES USE FIN).

THESE DRAWINGS ARE APPLICABLE ONLY TO THE PRODUCT SPECIFIED. THEY MAY NOT BE USED FOR THE ASSEMBLY AND/OR INSTALLATION OF ANY OTHER PRODUCT. APPROVAL OF ANY PRODUCT NOT PRODUCED BY THE MANUFACTURER STATED ON THESE DRAWINGS.




DRAWING NO.: 1987	SHEET NO.: 1 OF 3	DATE: 11/1/20	CHECKED BY: W.M.S.
DRAWING TITLE: IMPERVIA MODEL 2 NON-IMPACT VENT CASEMENT WINDOWS CONSULTANTS: WARREN W. SCHAEFER ENGINEERING & CONSULTING, P.A. (CA 6809) 7480 150TH COURT NORTH, PALM BEACH GARDENS, FL 33418, PHONE: 561-744-3424		MANUFACTURER: Pella Corporation 102 MAIN STREET, PELLA, IA 50219, 641-621-1000	
REVISIONS: NO. REVISION DESCRIPTION BY DATE			



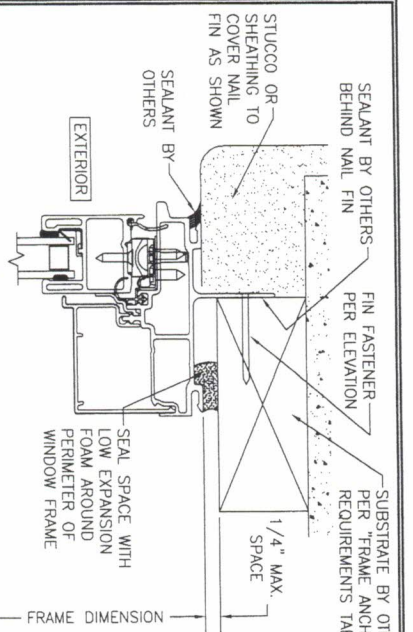
EXTERIOR ELEVATION:  
 SINGLE WINDOW  
 SCALE: 3/4" = 1'-0"  
 (FRAME SCREW & CLIP MOUNT CONDITION)

FRAME SCREWS OR INSTALLATION  
 CLIPS WHERE SHOWN, SEE  
 "FRAME ANCHOR REQUIREMENTS  
 TABLE" ON SHEET 1 FOR  
 REQUIREMENTS.

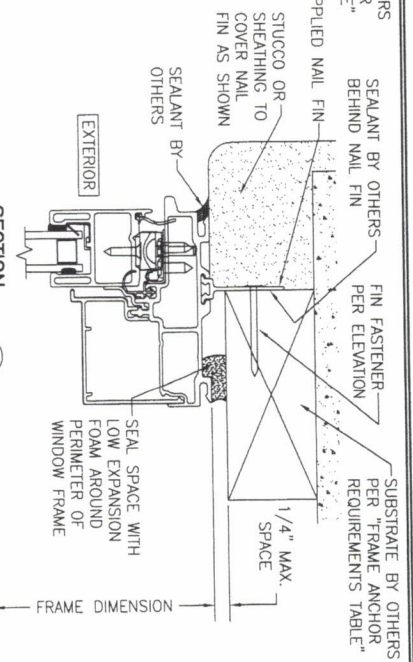


DRAWING NO. 1987	SHEET NO. 2 OF 3	CERTIFICATION WARREN W. SCHAEFER, P.E. P.E. NO. 44135	DRAWING TITLE <b>IMPERIA MODEL 2 NON-IMPACT VENT CASEMENT WINDOWS</b>	CONSULTANTS <b>WARREN W. SCHAEFER ENGINEERING &amp; CONSULTING, P.A. (CA 6809)</b> 7480 150TH COURT NORTH PALM BEACH GARDENS, FL 33418 PHONE: 561-744-3424	MANUFACTURER  <b>PELLA CORPORATION</b> 102 MAIN STREET PELLA, IA 50219 641-621-1000	NO.	REVISION	DESCRIPTION	BY	DATE

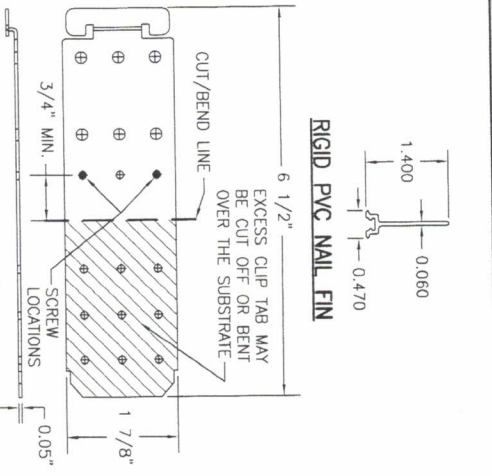




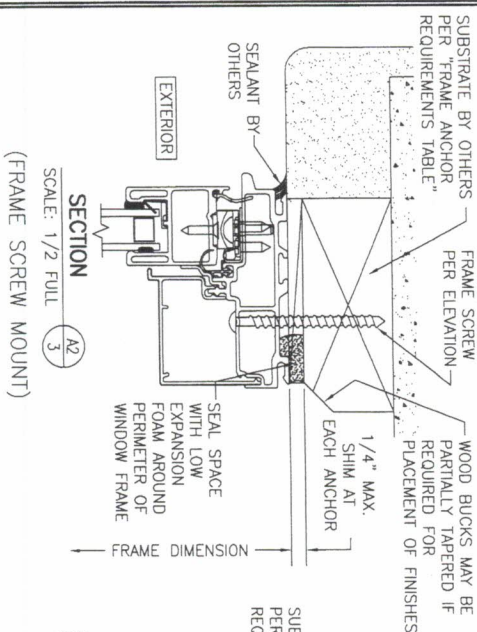
SECTION A1  
SCALE: 1/2 FULL  
(INTEGRAL NAIL FIN MOUNT)



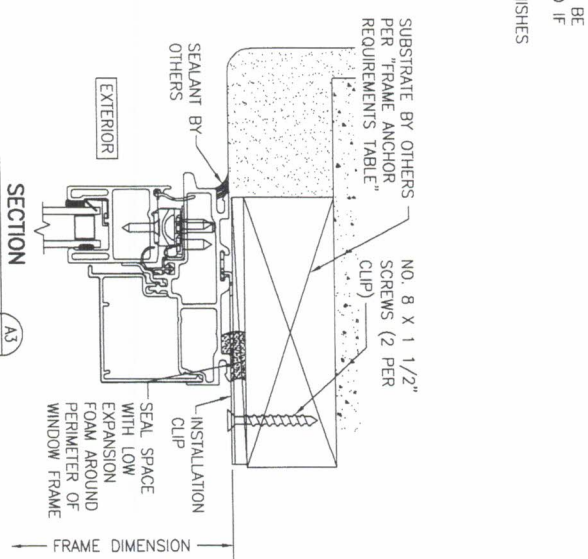
SECTION A1  
SCALE: 1/2 FULL  
(APPLIED NAIL FIN MOUNT)



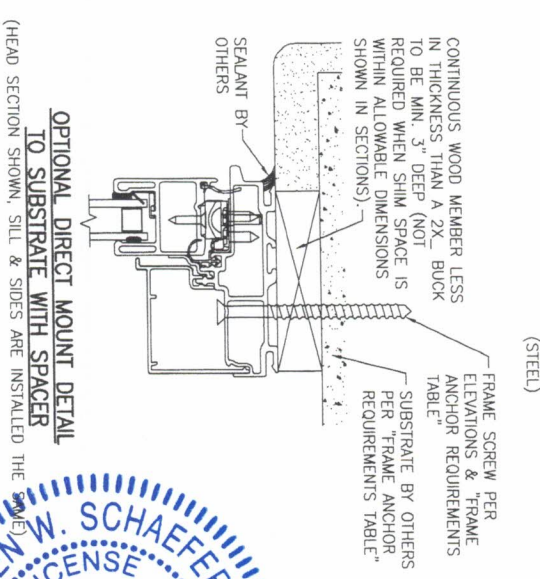
INSTALLATION CLIP (STEEL)



SECTION A2  
SCALE: 1/2 FULL  
(FRAME SCREW MOUNT)



SECTION A3  
SCALE: 1/2 FULL  
(INSTALLATION CLIP MOUNT)



OPTIONAL DIRECT MOUNT DETAIL TO SUBSTRATE WITH SPACER (HEAD SECTION SHOWN, SILL & SIDES ARE INSTALLED THE SAME)



NO.	REVISION	DESCRIPTION	BY	DATE
1-2				

DRAWING NO. 1987	WARREN W. SCHAEFFER, P.E. NO. 13020	CONSULTANTS W. W. SCHAEFFER ENGINEERING & CONSULTING, P.A. (CA 6809) 7480 SOUTH BOURT NORTH PALM BEACH GARDENS, FL 33418 PHONE 561-744-3424	MANUFACTURER Pella PELLA CORPORATION 102 MAIN STREET PELLA, IA 50219 641-621-1000
------------------	-------------------------------------	---	---

DRAWING NO. 1987	SHEET NO. 3 OF 3	NO. 1-2	DATE 11/11/20	PROJECT NO. 11/11/20
------------------	------------------	---------	---------------	----------------------